



**SLIDEKON**  
Glass Balcony Systems

**Technical Catalog**

[www.alkoncambalkon.com](http://www.alkoncambalkon.com)

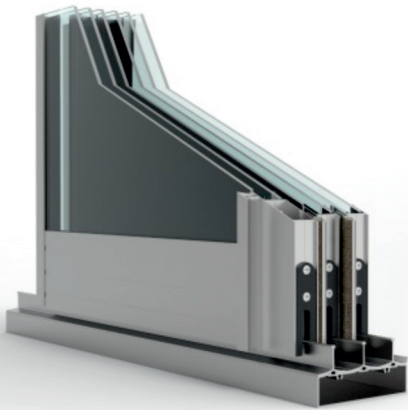
## Slidekon Threshold and Thresholdless Clamped Sliding Series

It allows the glasses to be collected by sliding to the side in the applied area, thus gaining space in the interior and providing more usage space. Provides a more spacious use in narrow application areas. It does not interfere with the exit points, thanks to the interlocking aluminum wicks at the glass joints, it reduces the glass flexing rate to zero and does not pass water, wind and dust inside. Thresholded Thresholdless Clamped Sliding Series 2 rail, 3 rail, 4 rail, 5 rail, 2 glass to 10 glass, sliding from side to side, can be opened to the right and left. Each panel has 2 roller carriers, 150 kg. carrier rollers are designed with 2 bearings.



## Slidekon Privileges

With 4 bearings, the panel weight is balanced with the height adjustment screw and offers quiet and comfortable use. It provides heat insulation, waterproofing and sound insulation with air cutters in 4 corners of the panels. Due to its wide frame model, it can be easily applied in cases where the Balcony Parapet does not meet the ceiling. All parts used in the system are stainless steel. Three types of locks are used in the system. Keyed cock lock, Aluminum klepsi lock, Aluminum pool lock. Two interlocking aluminum insulation seals are used on each glass. It provides easy manufacturing and assembly thanks to the guide cover to the vertical profile joints. It is applied as L, U, Flat (90o - 270o) 2 panels and multiple joints in winter garden, showcase glasses, balcony types. Threshold and non-threshold clamped sliding series glass usage 8 mm and 10 mm and 4+12+4 insulating glass can be used in both systems.

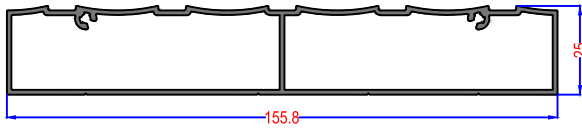


## Slidekon new generation height adjustable wheel system

With 4 bearings, the panel weight is balanced with the height adjustment screw and offers quiet and comfortable use. It provides heat insulation, waterproofing and sound insulation with air cutters in 4 corners of the panels. Due to its wide frame model, it can be easily applied in cases where the Balcony Parapet does not meet the ceiling. All parts used in the system are stainless steel. Three types of locks are used in the system. Keyed cock lock, Aluminum klepsi lock, Aluminum pool lock. Two interlocking aluminum insulation seals are used on each glass. It provides easy manufacturing and assembly thanks to the guide cover to the vertical profile joints. It is applied as L, U, Flat (90o - 270o) 2 panels and multiple joints in winter garden, showcase glasses, balcony types. Threshold and non-threshold clamped sliding series glass usage 8 mm and 10 mm and 4+12+4 insulating glass can be used in both systems.



<b>Glass Thickness and Properties</b>	20 mm Glass 4+12+4
<b>Glass Colors</b>	Transparent, Smoked, Bronze, Green, Blue
<b>Profile Colors</b>	RAL Color Options
<b>Accessory Options</b>	Black, Gray
<b>Insulation Equipment</b>	Barrier Insulation Brush, Aluminum Roving
<b>Max Glass Panel Width</b>	1100 mm
<b>Max Glass Panel Height</b>	3500 mm
<b>Max Number of Bidirectional Panels</b>	10 Pieces
<b>Rustproof Guarantee</b>	10 years
<b>Part Warranty</b>	10 years
<b>Part Procurement</b>	10 years
<b>Insulation Rate</b>	90%
<b>Service</b>	2 Years
<b>Liquid Drain System Ratio</b>	98%
<b>Noise Isolation</b>	95%
<b>Security</b>	Espagnolette 3-point non-flexible steel pins are used with the lock



Profile Name:

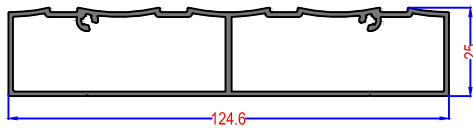
5's Line Box

Code Nr.:

**SLIDEKON-AL-1700**

Weight kg/m:

**9.3 kg - 6.50 m - (1430 gr/m)**



Profile Name:

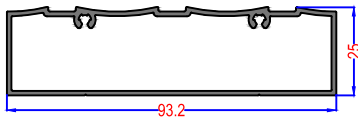
4's Line Box

Code Nr.:

**SLIDEKON-AL-1701**

Weight kg/m:

**7.9 kg - 6.50 m - (1224 gr/m)**



Profile Name:

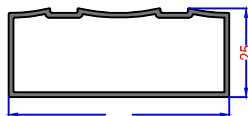
3's Line Box

Code Nr.:

**SLIDEKON-AL-1702**

Weight kg/m:

**5.5 kg - 6.50 m - (850 gr/m)**



Profile Name:

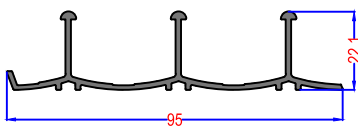
2's Line Box

Code Nr.:

**SLIDEKON-AL-1703**

Weight kg/m:

**3.9 kg - 6.50 m - (600 gr/m)**



Profile Name:

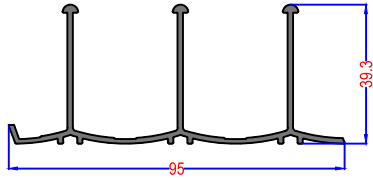
3's Bottom Rail

Code Nr.:

**SLIDEKON-AL-1704**

Weight kg/m:

**4.4 kg - 6.50 m - (685 gr/m)**



Profile Name:

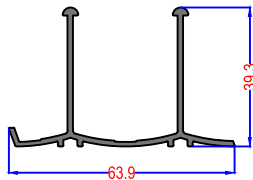
3's Top Rail

Code Nr.:

SLIDEKON-AL-1705

Weight kg/m:

5.7 kg - 6.50 m - (890 gr/m)



Profile Name:

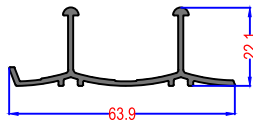
2's Top Rail

Code Nr.:

SLIDEKON-AL-1706

Weight kg/m:

3.9 kg - 6.50 m - (600 gr/m)



Profile Name:

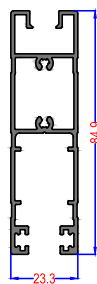
2's Bottom Rail

Code Nr.:

SLIDEKON-AL-1707

Weight kg/m:

2.9 kg - 6.50 m - (460 gr/m)



Profile Name:

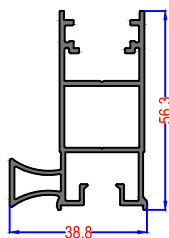
Top - Bottom Panel 8-10 mm

Code Nr.:

SLIDEKON-AL-1708

Weight kg/m:

6.7 kg - 6.50 m - (1040 gr/m)



Profile Name:

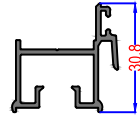
Sliding Pull Arm

Code Nr.:

SLIDEKON-AL-1709

Weight kg/m:

5.6 kg - 6.50 m - (860 gr/m)



Profile Name:

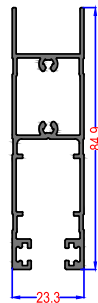
Spacing Wick

Code Nr.:

**SLIDEKON-AL-1710**

Weight kg/m:

**2.6 kg - 6.50 m - (400 gr/m)**



Profile Name:

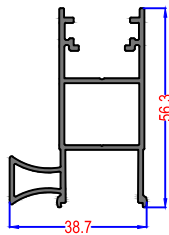
Sliding Insulation Base

Code Nr.:

**SLIDEKON-AL-1711**

Weight kg/m:

**6.3 kg - 6.50 m - (970 gr/m)**



Profile Name:

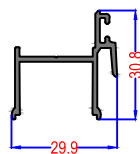
Sliding Insulation Pull Arm

Code Nr.:

**SLIDEKON-AL-1712**

Weight kg/m:

**5.1 kg - 6.50 m - (790 gr/m)**



Profile Name:

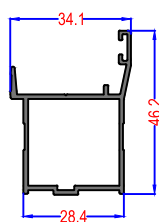
Insulation Spacing Wick

Code Nr.:

**SLIDEKON-AL-1713**

Weight kg/m:

**2.2 kg - 6.50 m - (340 gr/m)**



Profile Name:

Sliding Side Profile

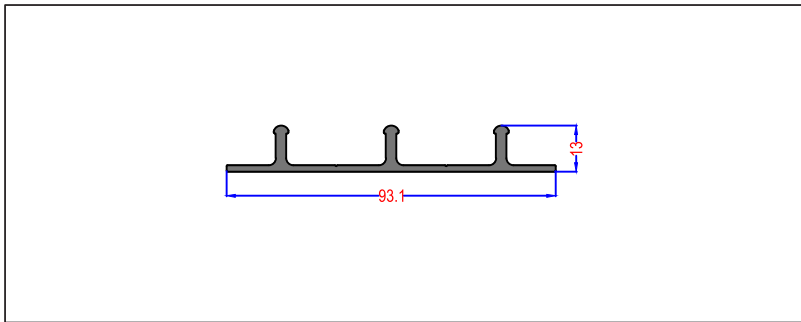
Code Nr.:

**SLIDEKON-AL-1714**

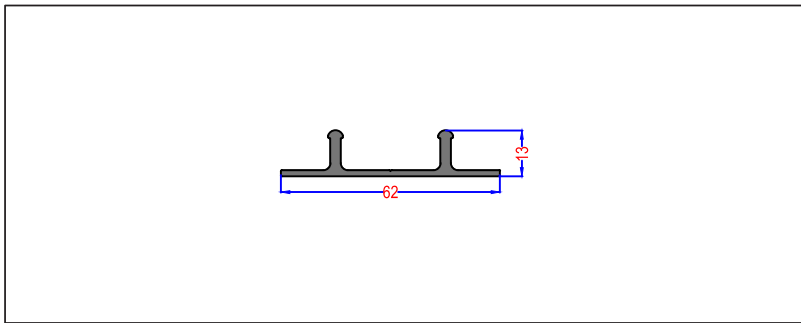
Weight kg/m:

**3.2 kg - 6.50 m - (500 gr/m)**

Glass Balcony Systems SLIDEKON SYSTEM



Profile Name:
3'erBottom Rail Without Threshold
Code Nr.:
SLIDEKON-AL-1721
Weight kg/m:
4.8 kg - 6.50 m - (740 gr/m)



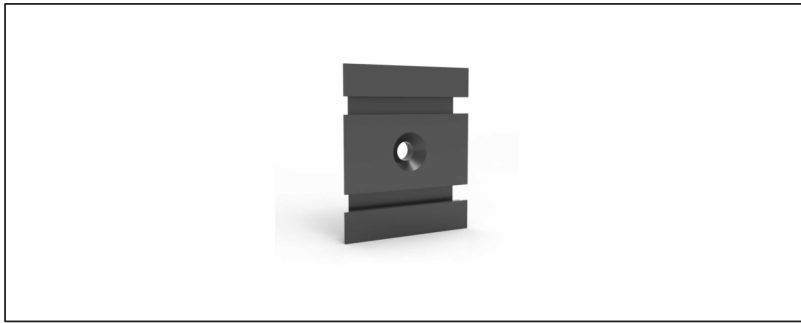
Profile Name:
2'er Bottom Rail Without Threshold
Code Nr.:
SLIDEKON-AL-1722
Weight kg/m:
3.2 kg - 6.50 m - (490 gr/m)



Profile Name:
Sliding Interior Wedge
Code Nr.:
SLIDEKON-AL-1715
Material:
Polyamide

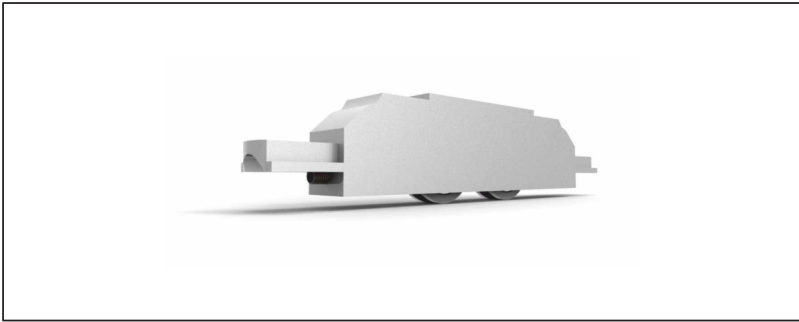


Profile Name:
Sliding Guide Cover
Code Nr.:
SLIDEKON-AL-1716
Material:
Polyamide

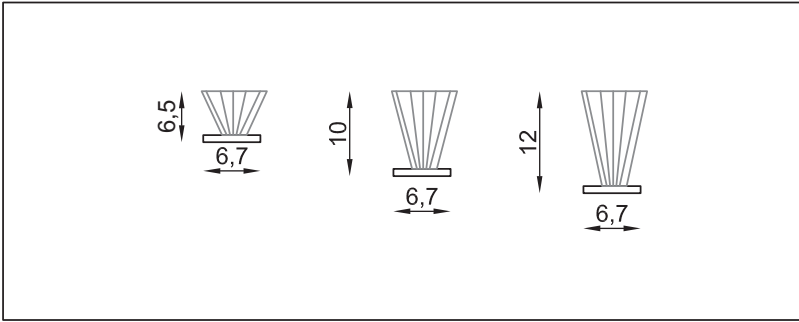


Profile Name:
Sliding Air Stopper
Code Nr.:
SLIDEKON-AL-1717
Material:
Polyamide

Glass Balcony Systems SLIDEKON SYSTEM



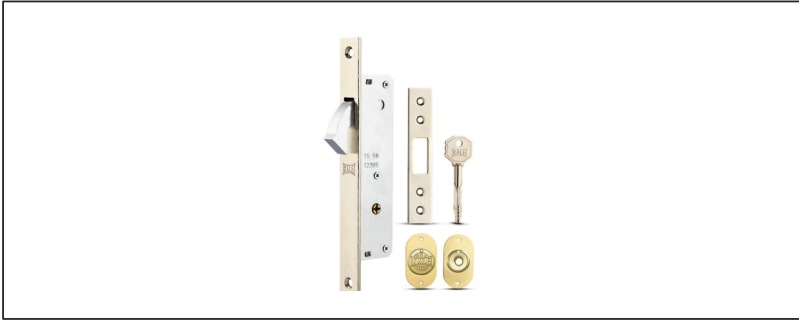
Profile Name:
Sliding Wheel
Code Nr.:
<b>SLIDEKON-AL-1718</b>
Material:
<b>Polyamide</b>



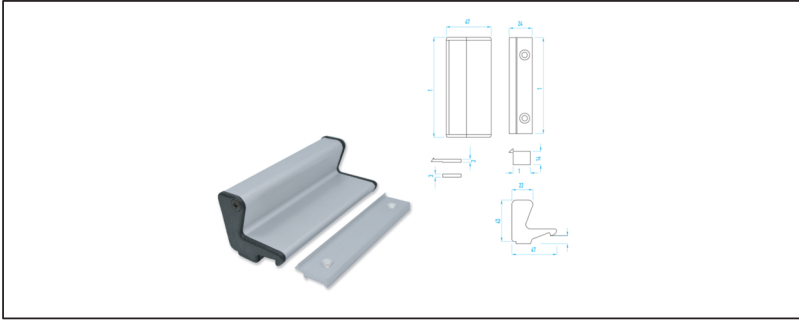
Profile Name:
Brush 650/1000/1200
Code Nr.:
<b>SLIDEKON-AL-1719-1720</b>
Material:
<b>PVC</b>



Profile Name:
Espagnolette Lock Set
Code Nr.:
<b>SLIDEKON-AL-1723</b>
Material:
<b>Polyamide</b>



Profile Name:
Lock Set
Code Nr.:
<b>SLIDEKON-AL-1724</b>
Material:
<b>Steel</b>



Profile Name:
Lock Set
Code Nr.:
<b>SLIDEKON-AL-1725</b>
Material:
<b>Aluminum</b>



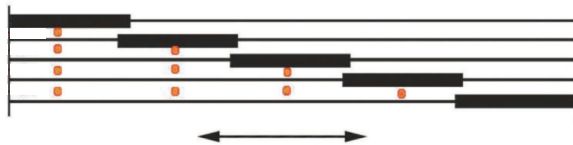
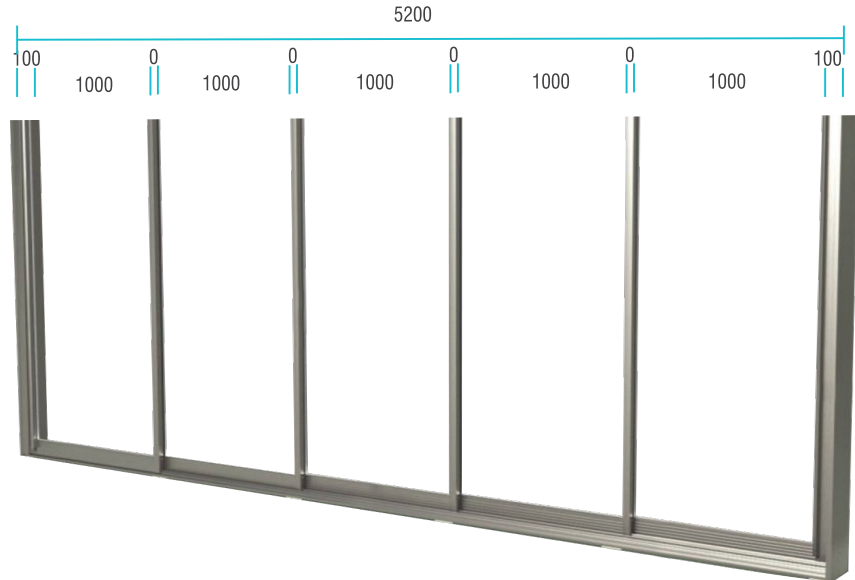


Profile Name:
Lock Set
Code Nr.:
SLIDEKON-AL-1726
Material:
Zamac



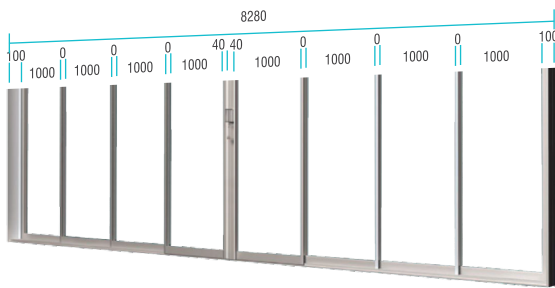
Profile Name:
Lock Set
Code Nr.:
SLIDEKON-AL-1727
Material:
Zamac

5 Rail Right or Left can be collected



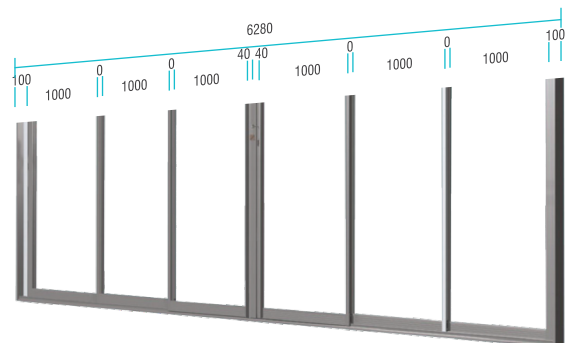
8 mm & 10 mm  
Water drain holes

4 Rail, from Center to Right and Left to Open



8 mm & 10 mm  
Water drain holes

Threshold 3 Rail from Center to Right and Left open



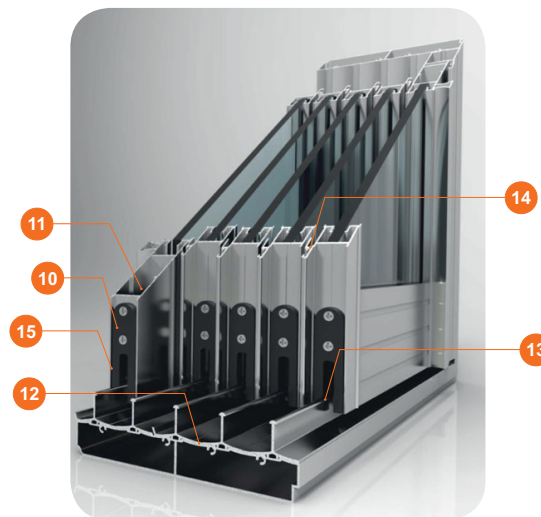
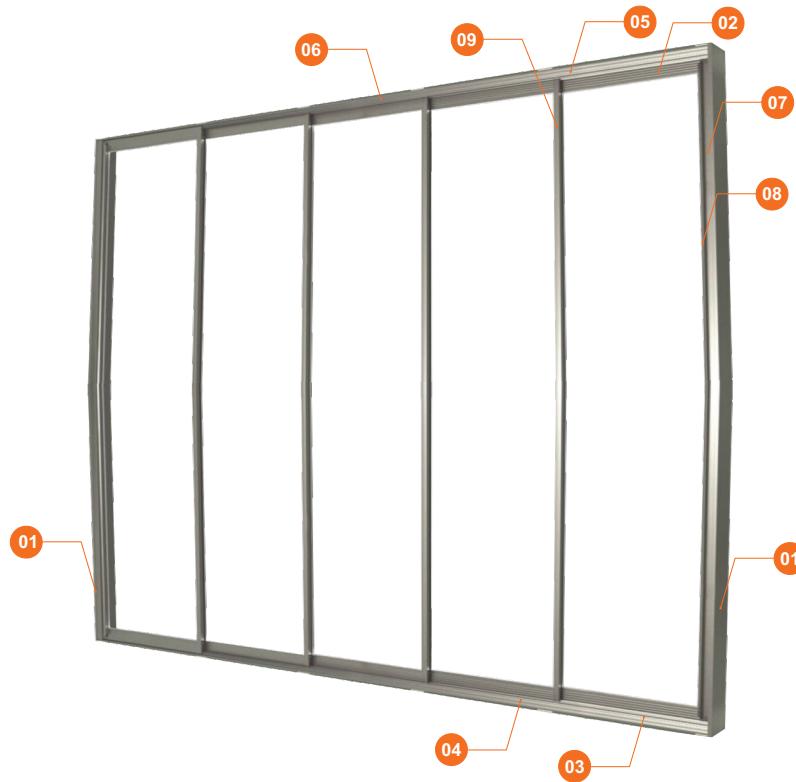
8 mm & 10 mm  
Water drain holes

# SLIDEKON Section



Glass Balcony Systems

SLIDEKON SYSTEM



01 SLIDEKON-AL-1700	05 SLIDEKON-AL-1705	09 SLIDEKON-AL-1710	13 SLIDEKON-AL-1719
02 SLIDEKON-AL-1708	06 SLIDEKON-AL-1706	10 SLIDEKON-AL-1716	14 SLIDEKON-AL-1720
03 SLIDEKON-AL-1704	07 SLIDEKON-AL-1714	11 SLIDEKON-AL-1715	15 SLIDEKON-AL-1723
04 SLIDEKON-AL-1707	08 SLIDEKON-AL-1709	12 SLIDEKON-AL-1717	

### 90 Degree 3 Rail Size Calculation

